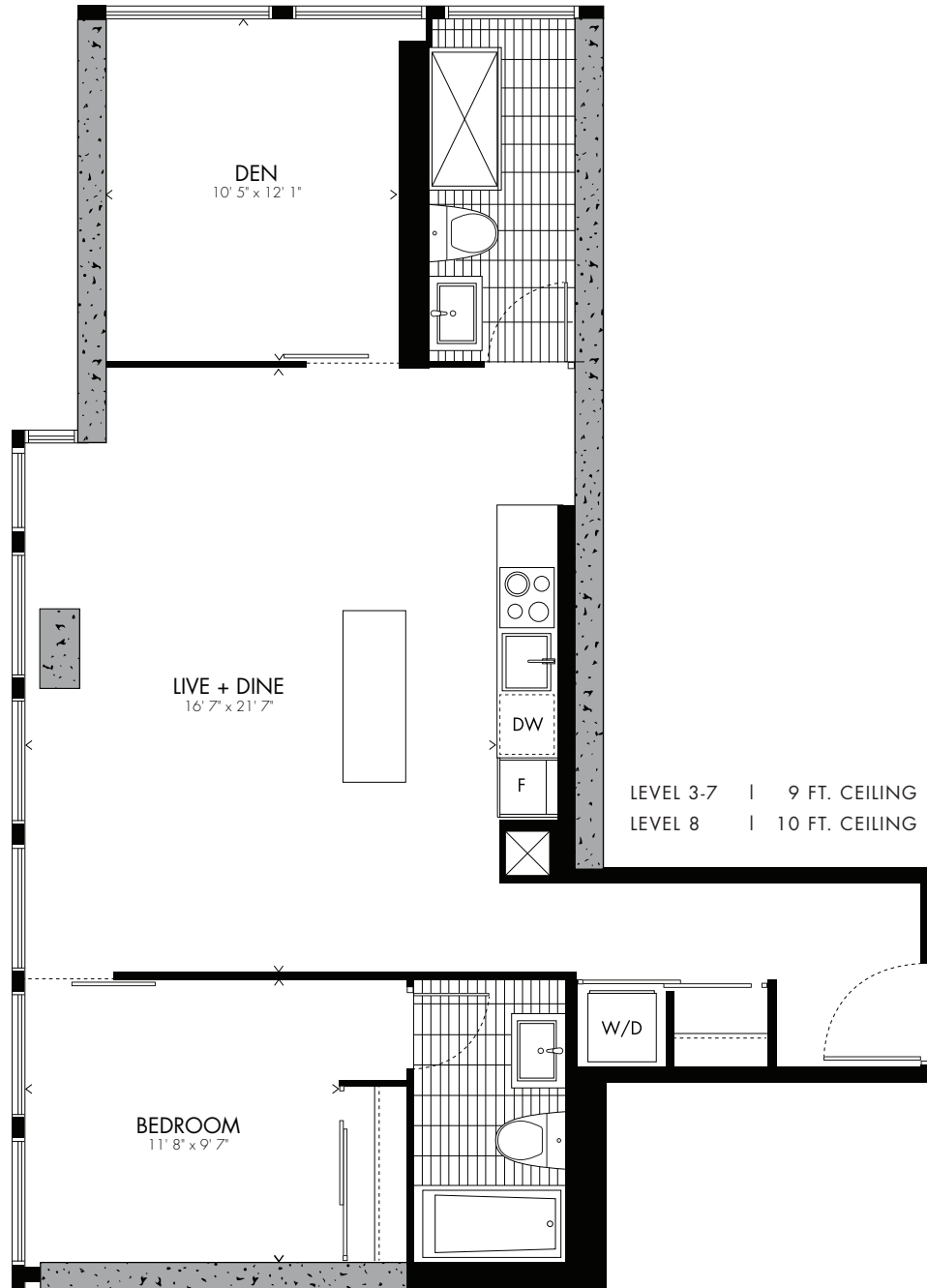


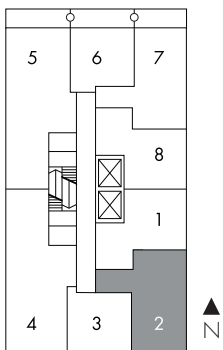
Stölzl ⁰² one bedroom + den

980 sq.ft.



LEVEL 3-7 | 9 FT. CEILING
LEVEL 8 | 10 FT. CEILING

LEVEL 3-8



All prices, sizes and specifications are subject to change without notice. E.A.O.E.



Gunta Stölzl was a German textile artist who played a fundamental role in the development of the Bauhaus school's weaving workshop. As the Bauhaus' only female master she created enormous change within the weaving department as it transitioned from individual pictorial works to modern industrial designs. Her textile work is thought to typify the distinctive style of Bauhaus textiles.

BAUHAUS