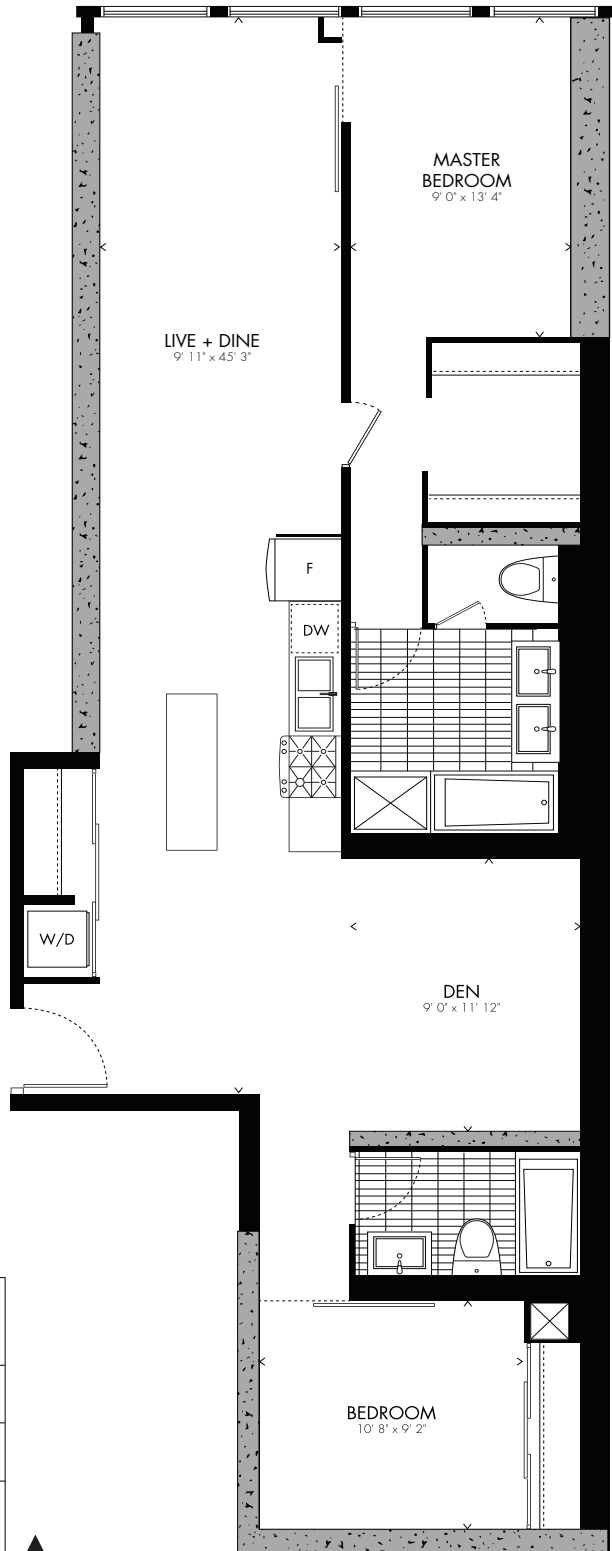
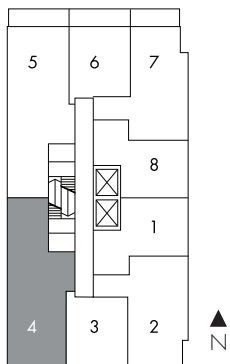


Muche ⁰⁴ two bedroom + den

1,325 sq.ft.



LEVEL 3-8



All prices, sizes and specifications are subject to change without notice. E.A.D.E.

LEVEL 3-7 | 9 FT. CEILING
LEVEL 8 | 10 FT. CEILING



Georg Muche was a German artist and member of the Bauhaus. Georg Muche left the Bauhaus in 1927 to teach at a private art school founded three years previously by Johannes Itten. In 1960 Georg Muche moved to Lindau on Lake Constance, where he worked freelance as a painter and graphic artist.

BAUHAUS