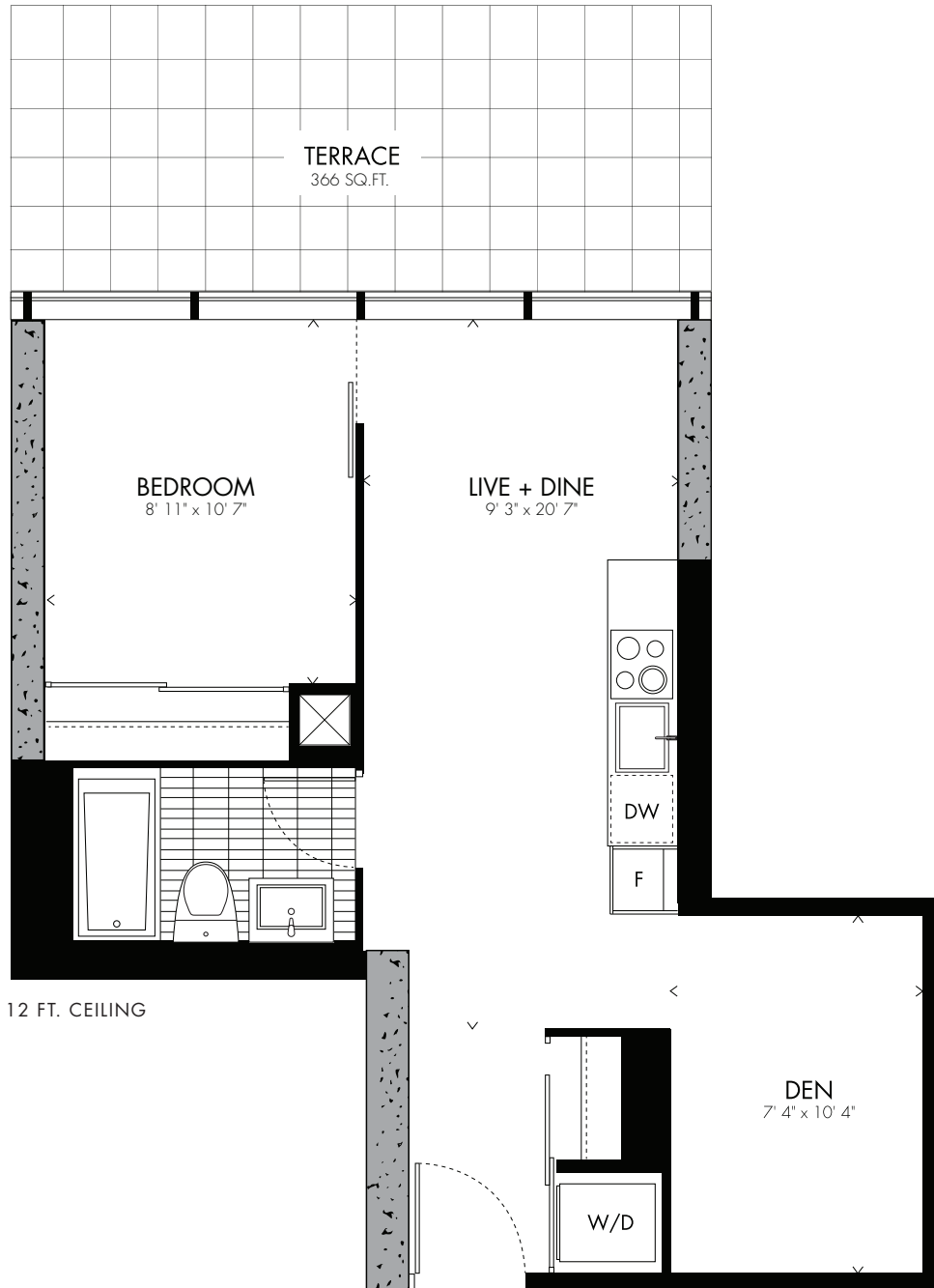
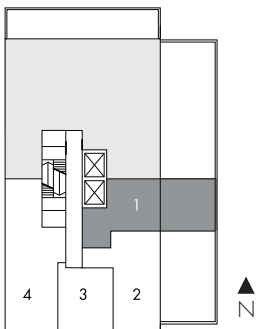


# Henri <sup>01</sup> one bedroom + den

583 sq.ft.



LEVEL 2



All prices, sizes and specifications are subject to change without notice. E.O.D.E.



Not until she came to the Bauhaus did Florence Henri come in contact with photography. The painter entered uncharted territory by earning a living with a photo studio of her own after she returned to Paris. In her photos, Henri expanded perspectives through reflections, overlapping and penetrations.

BAUHAUS